

2010 Census Partner Resolution
A resolution affirming
West Basin MWD

support of and partnership with the 2010 Census.

WHEREAS the U.S. Census Bureau is required by the Constitution of the United States of America to conduct a count of the population and provides a historic opportunity for to help shape the foundation of our society and play an active role in American democracy;

WHEREAS *West Basin MWD* is committed to ensuring every resident is counted;

WHEREAS more than \$300 billion per year in federal and state funding is allocated to communities, and decisions are made on matters of national and local importance based on census data, including healthcare, community development, housing, education, transportation, social services, employment, and much more;

WHEREAS census data determine how many seats each state will have in the U.S. House of Representatives as well as the redistricting of state legislatures, county and city councils, and voting districts;

WHEREAS the 2010 Census creates hundreds of thousands of jobs across the nation;

WHEREAS every Census Bureau worker takes a lifetime oath to protect confidentiality and ensure that data identifying respondents or their household not be released or shared for 72 years;

WHEREAS a united voice from businesses, government, community-based and faith-based organizations, educators, media and others will allow the 2010 Census message to reach a broader audience, providing trusted advocates who can spark positive conversations about the 2010 Census;

WHEREAS *West Basin MWD* participation will significantly aid in increasing the 2010 Census count.

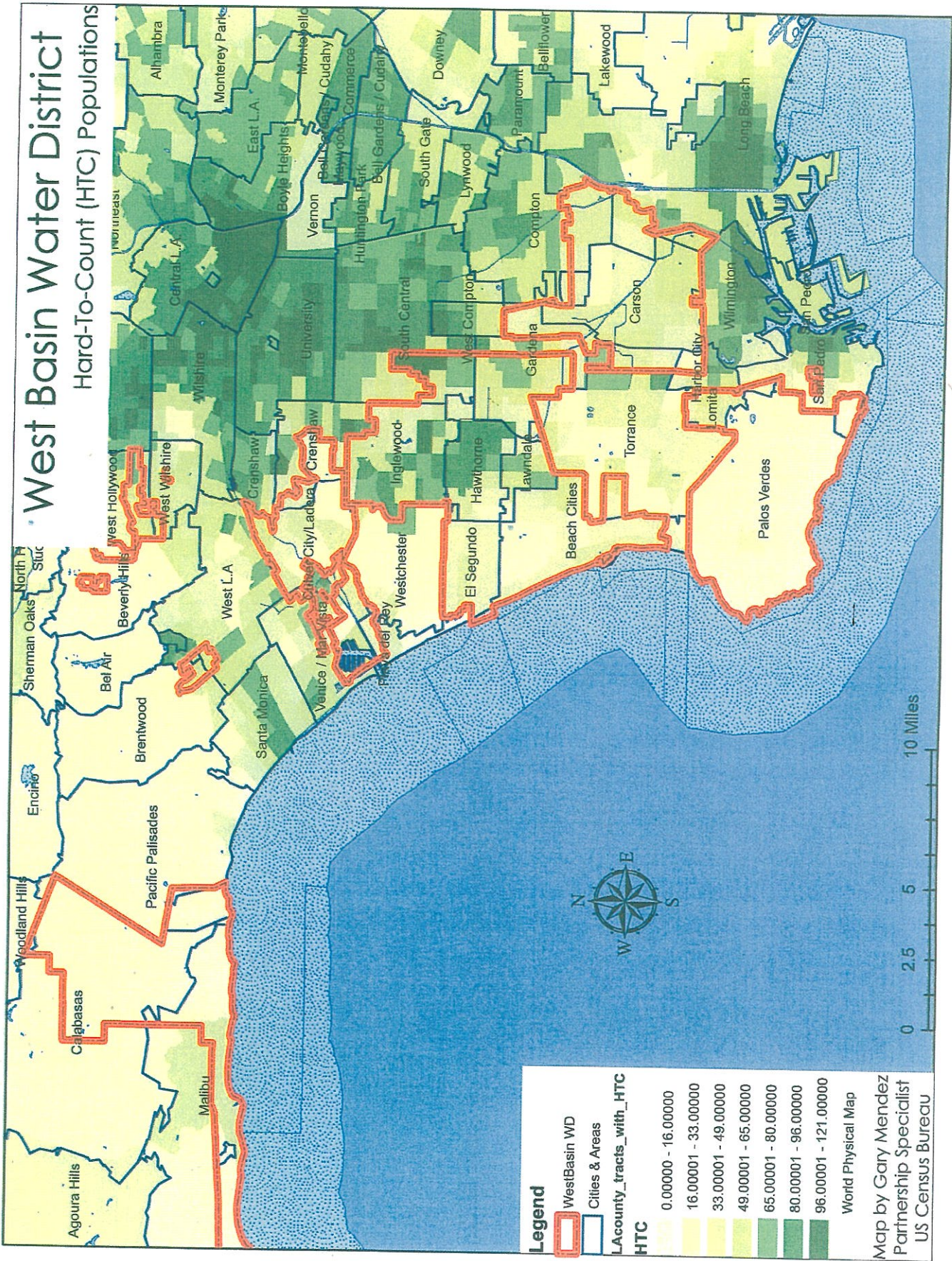
Now, therefore, BE IT RESOLVED that :

The West Basin MWD hereby enters into a partnership with the United State Census Bureau and will participate in a local Complete Count Committee comprised of businesses, government, community-based and faith-based organizations, educators, media and others.

Supports the goals and ideals for the 2010 Census and will disseminate 2010 Census information to encourage participation.

Encourages residents to participate in events and initiatives that will raise overall awareness of the 2010 Census and increase participation among all populations.

West Basin Water District Hard-To-Count (HTC) Populations



Legend

- WestBasin WD
- Cities & Areas
- LAcouny_tracts_with_HTC
- HTC

0.00000 - 16.00000
16.00001 - 33.00000
33.00001 - 49.00000
49.00001 - 65.00000
65.00001 - 80.00000
80.00001 - 96.00000
96.00001 - 121.00000

World Physical Map

Map by Gary Mendez
Partnership Specialist
US Census Bureau