

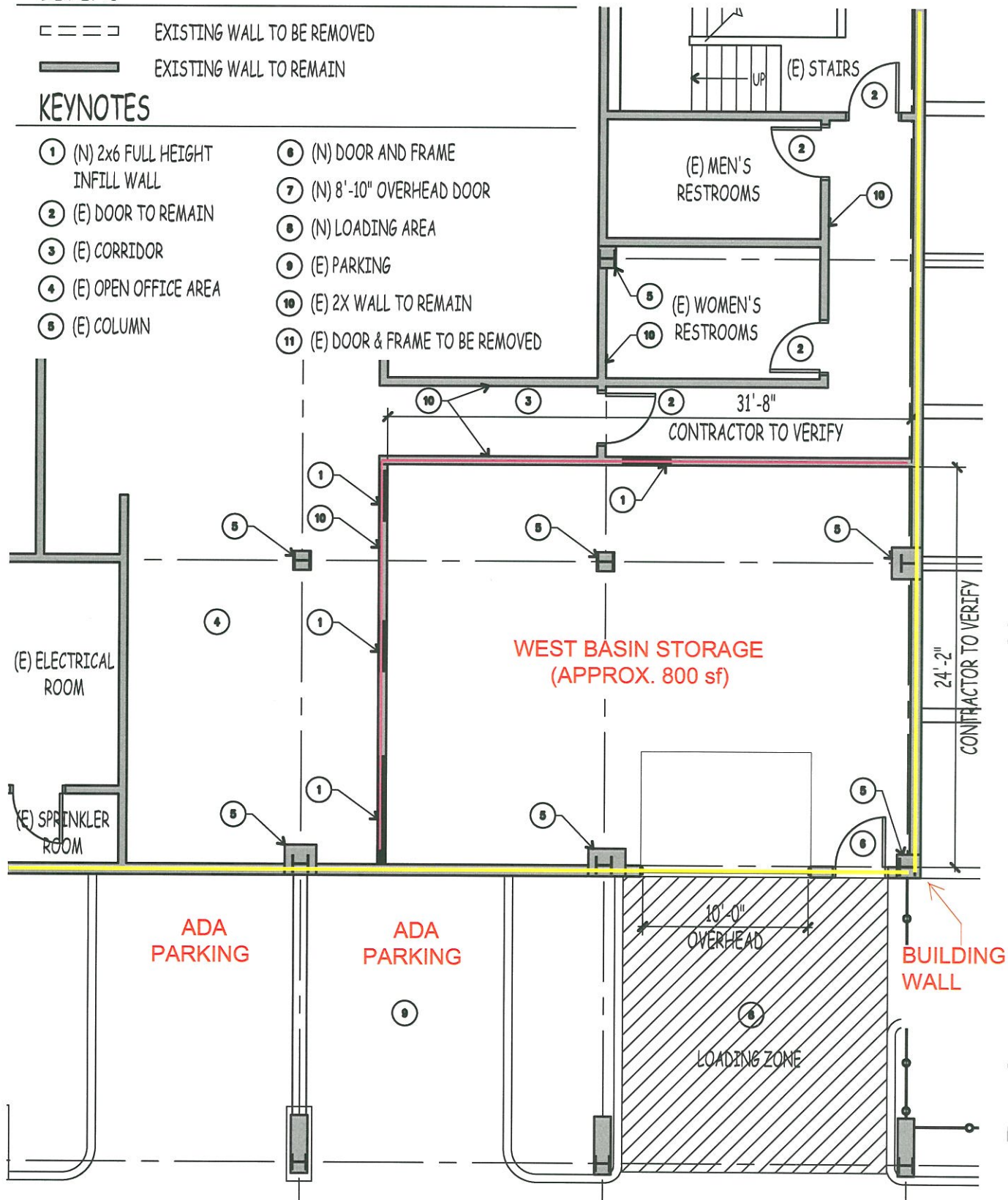
# LEGEND

- EXISTING WALL TO BE REMOVED
- EXISTING WALL TO REMAIN

# KEYNOTES

- ① (N) 2x6 FULL HEIGHT INFILL WALL
- ② (E) DOOR TO REMAIN
- ③ (E) CORRIDOR
- ④ (E) OPEN OFFICE AREA
- ⑤ (E) COLUMN
- ⑥ (N) DOOR AND FRAME
- ⑦ (N) 8'-10" OVERHEAD DOOR
- ⑧ (N) LOADING AREA
- ⑨ (E) PARKING
- ⑩ (E) 2X WALL TO REMAIN
- ⑪ (E) DOOR & FRAME TO BE REMOVED

REAR BUILDING ACCESS



West Basin Administrative Office Spaces Design

1/8"=1'-0"  
Proposed Floor Plan



3765 South Higuera St., Ste. 102, San Luis Obispo, CA 93401  
P: (805) 543-1794 | F: (805) 543-6000 | www.rmdesign.com

June, 2009

1108555

A1